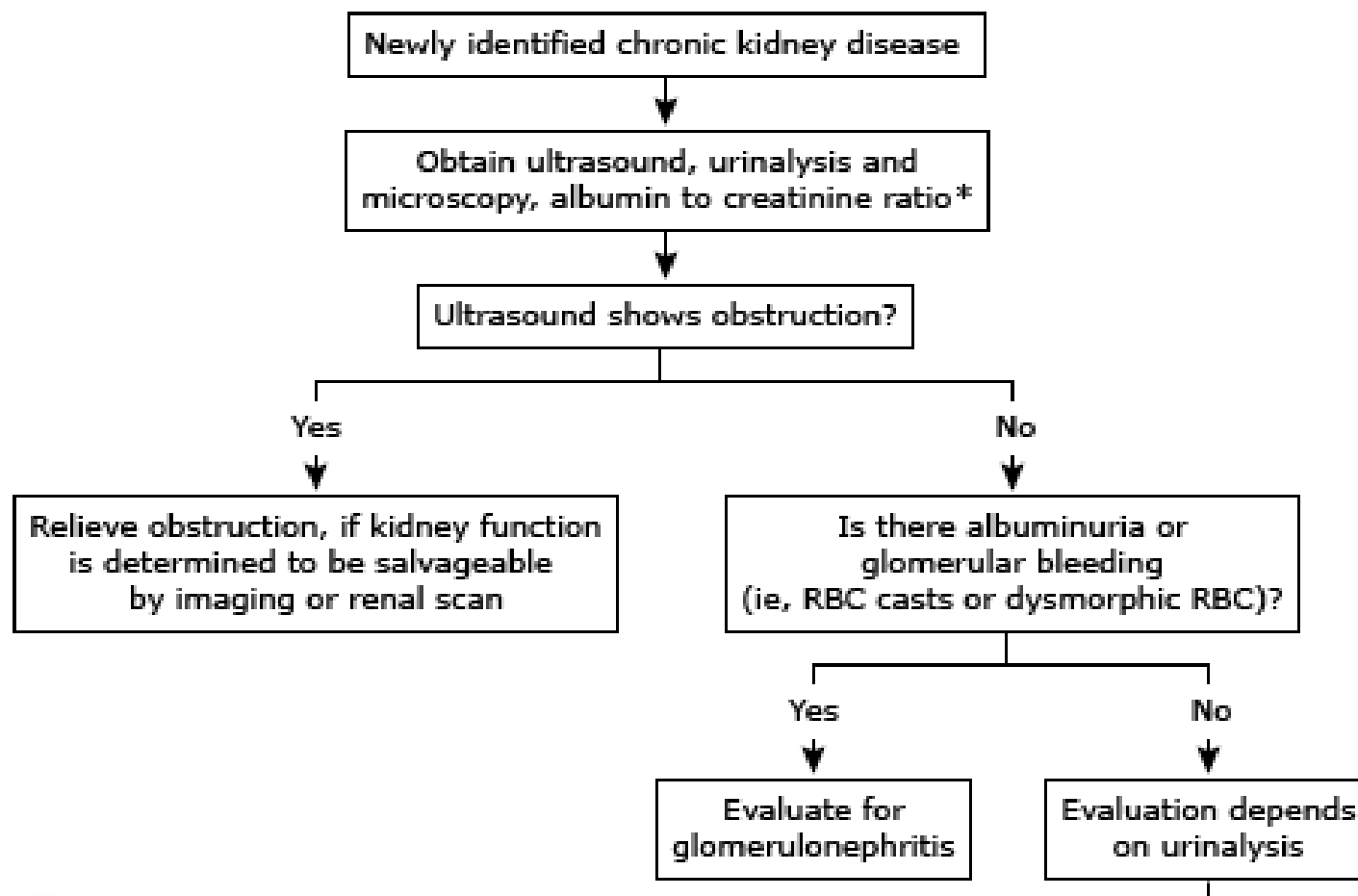
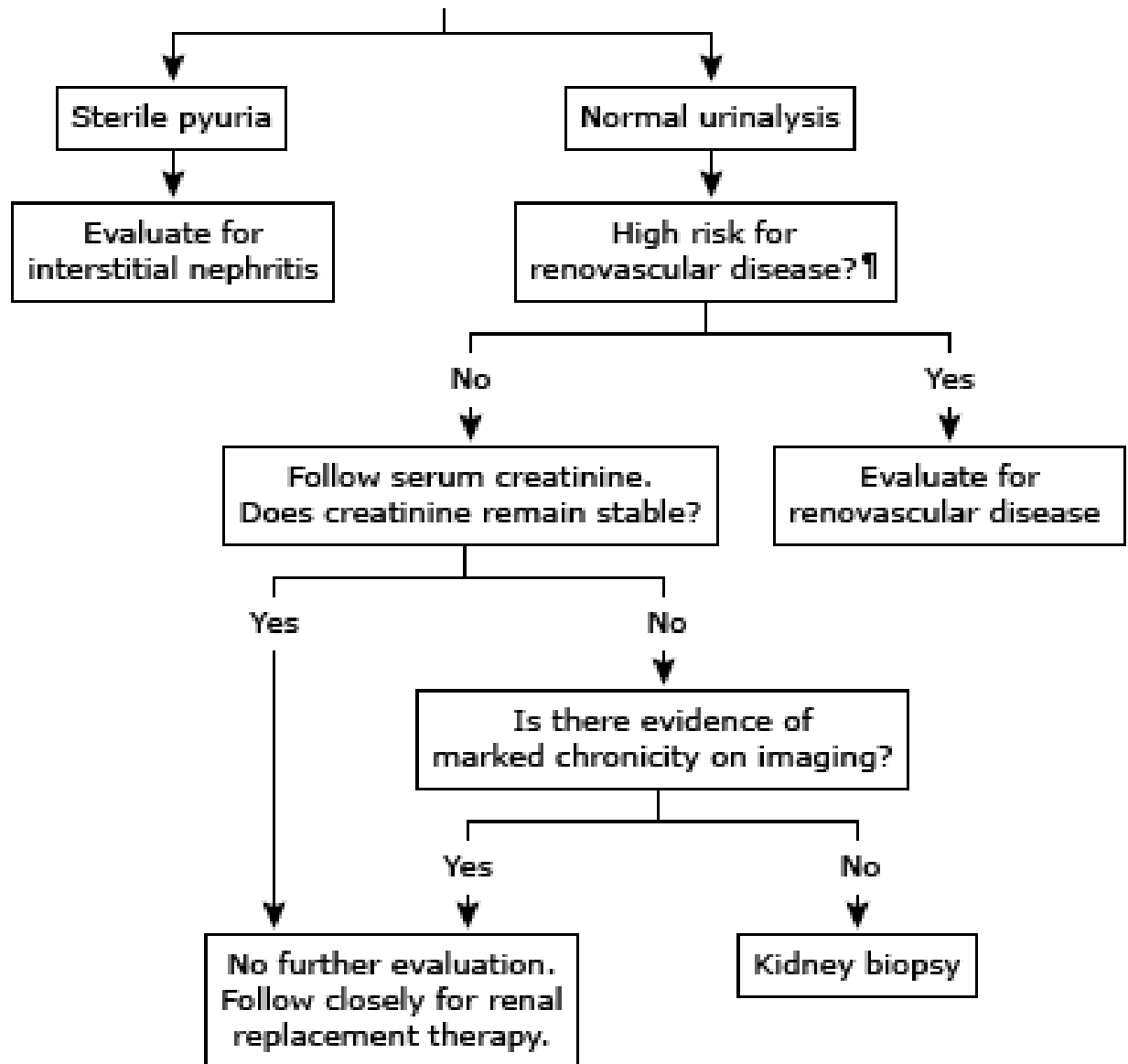
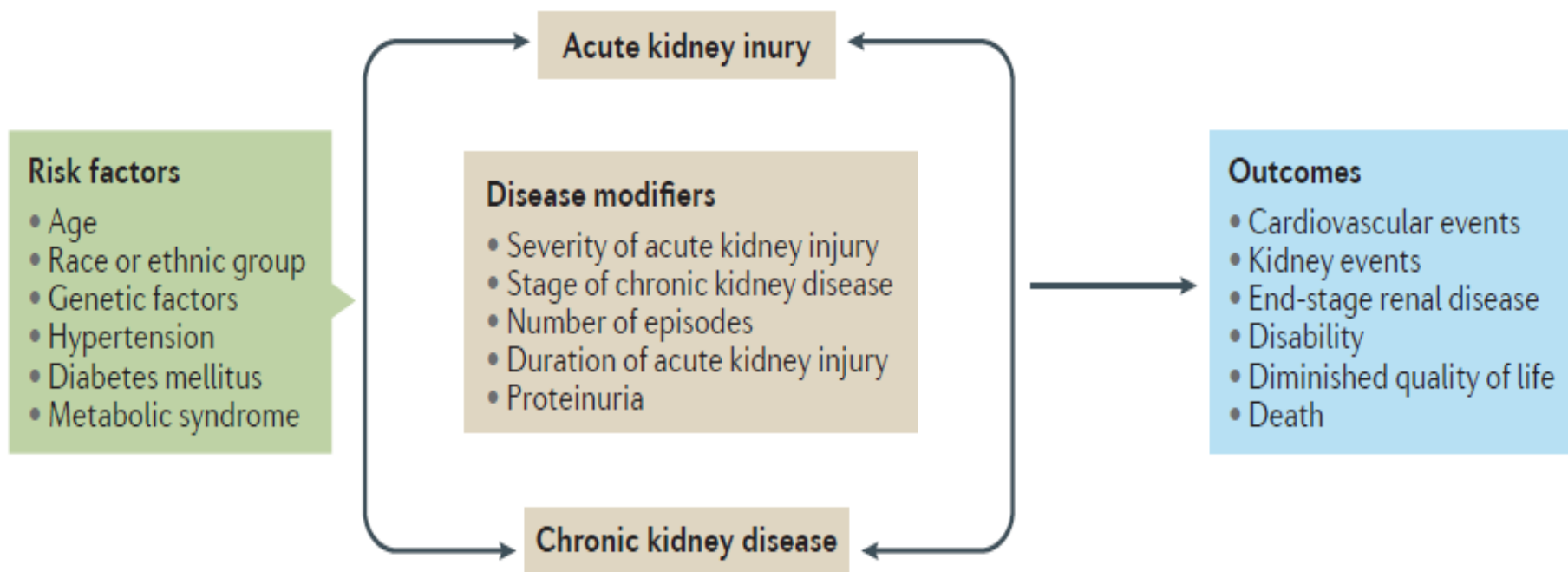


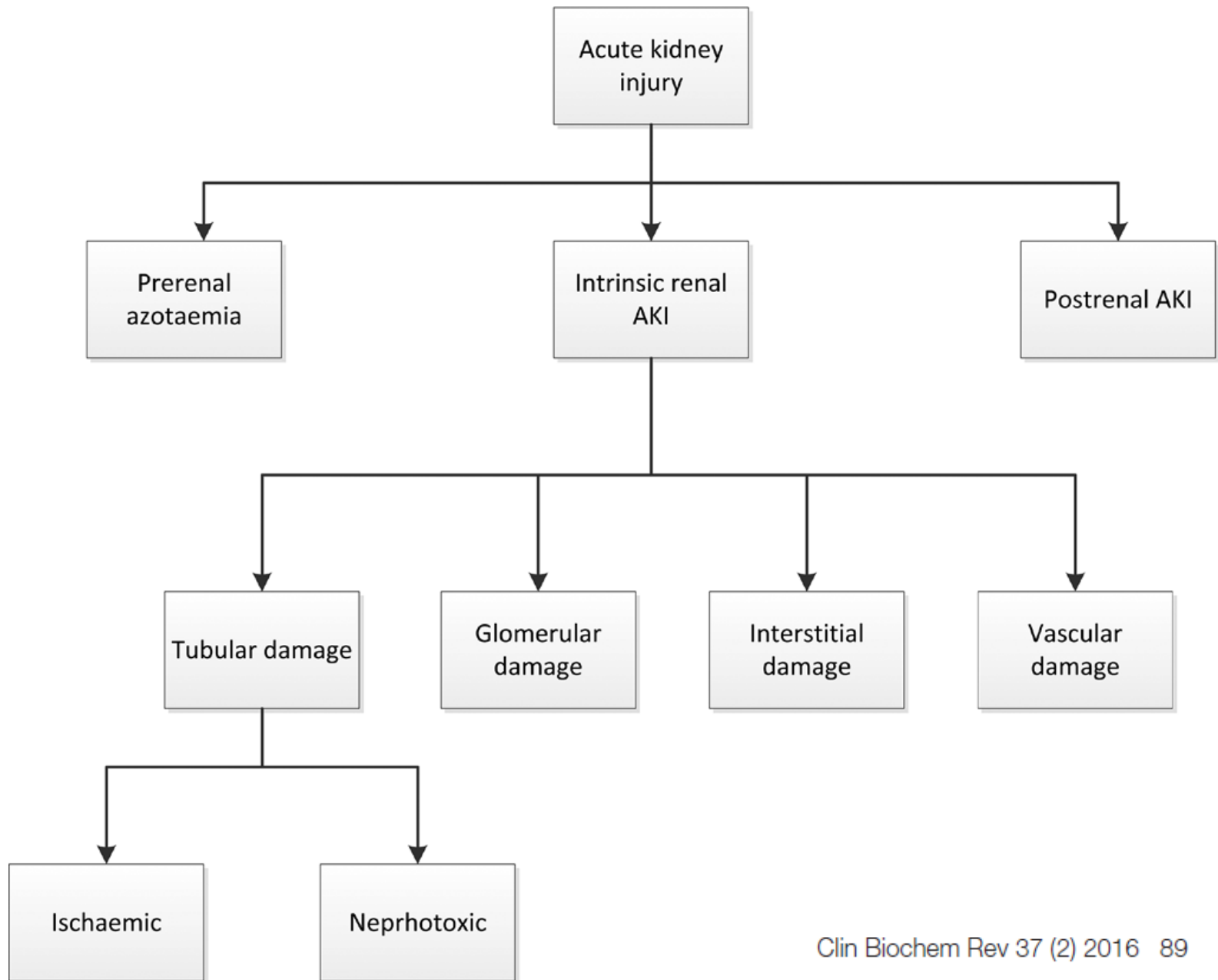
Injuria Renal Aguda vs Insuficiencia Renal Crónica

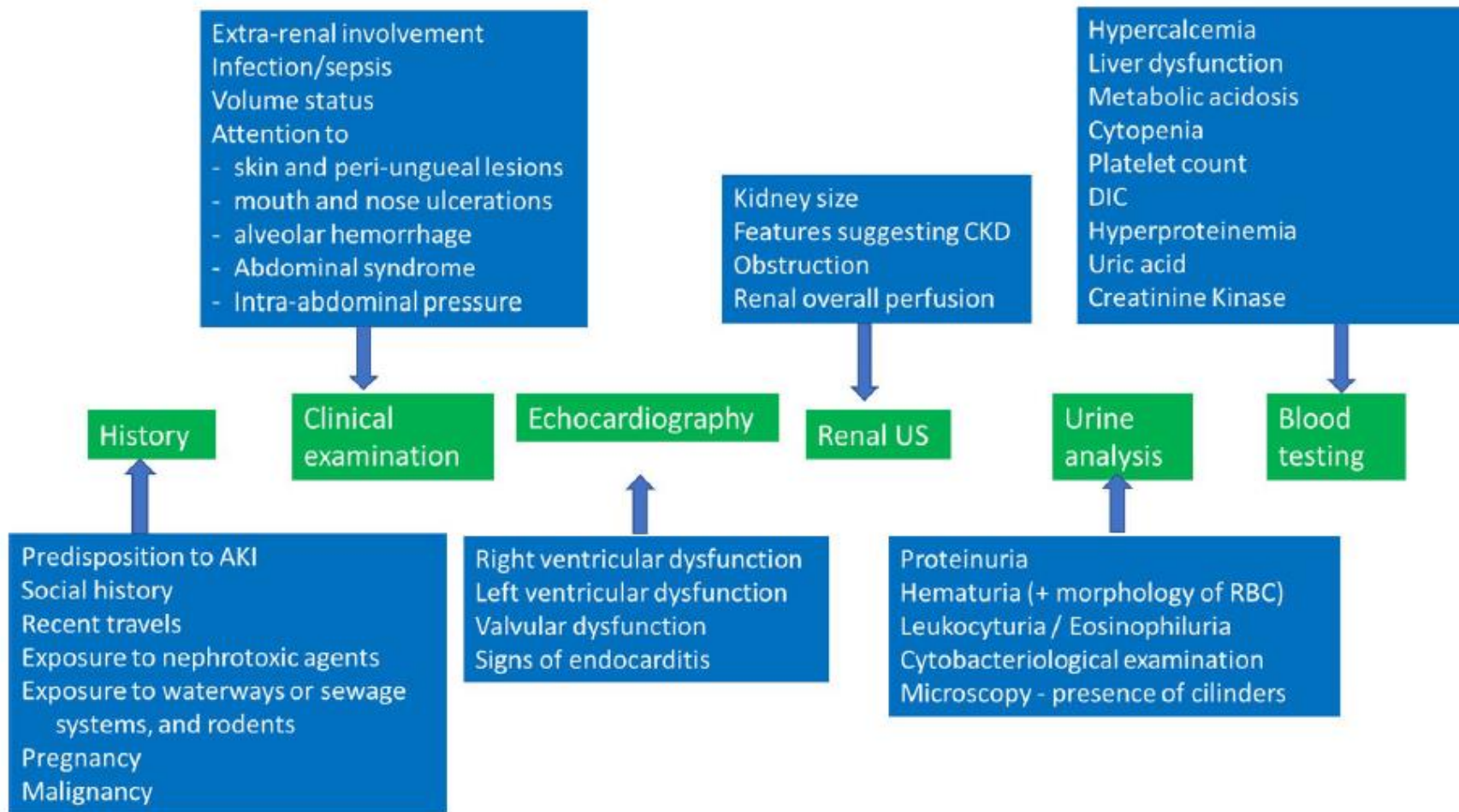
Ivan Goic Borojevic

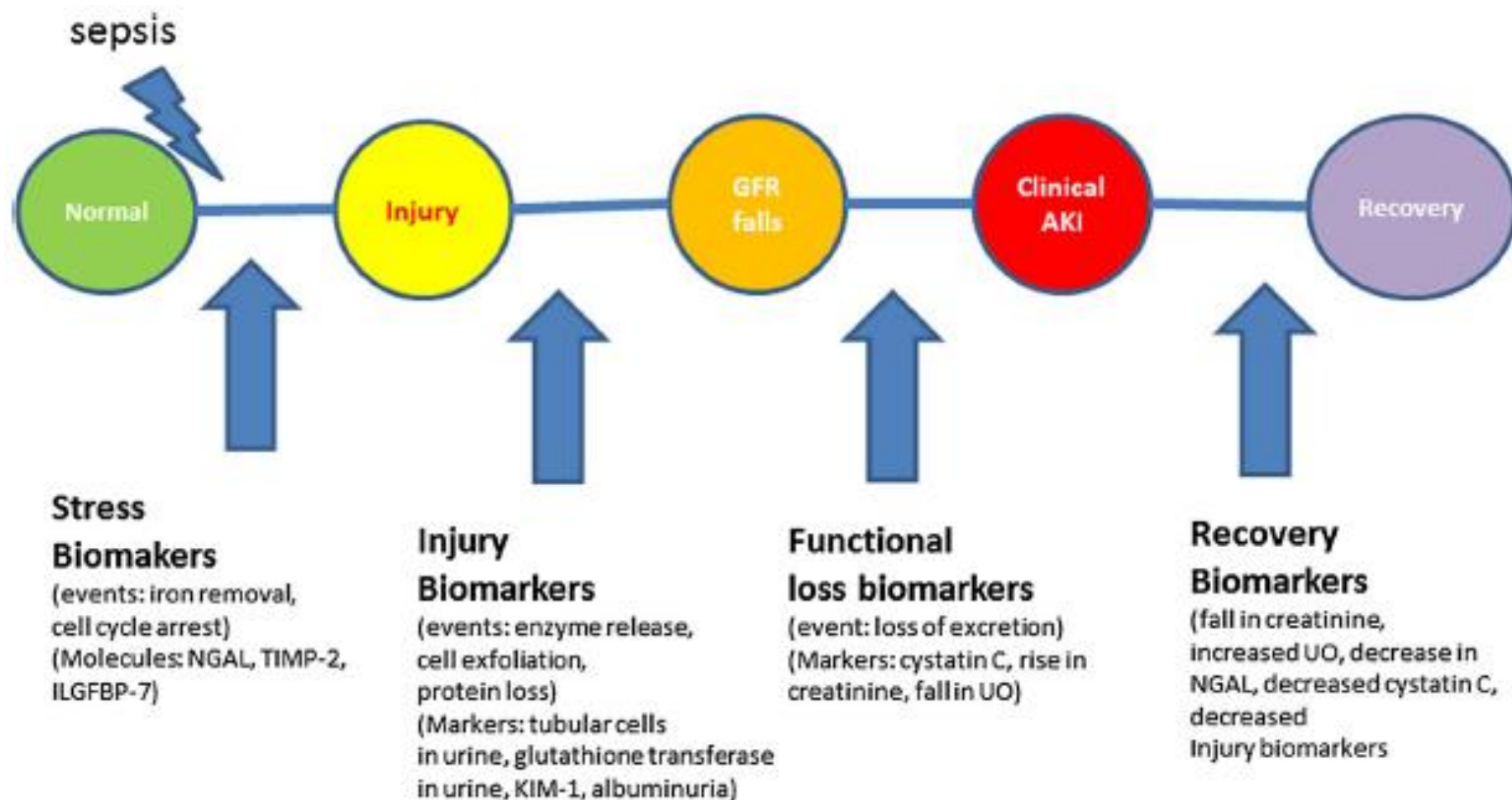












*NGAL: neutrophil gelatinase associated lipocalin; TIMP: tissue inhibitor of metallo-proteinase; ILGFBP: insulin like growth factor binding protein
KIM: kidney injury molecule; UO: urinary output

Fig. 1 Potential contribution of novel renal injury biomarkers to the detection, prevention, and treatment of septic AKI

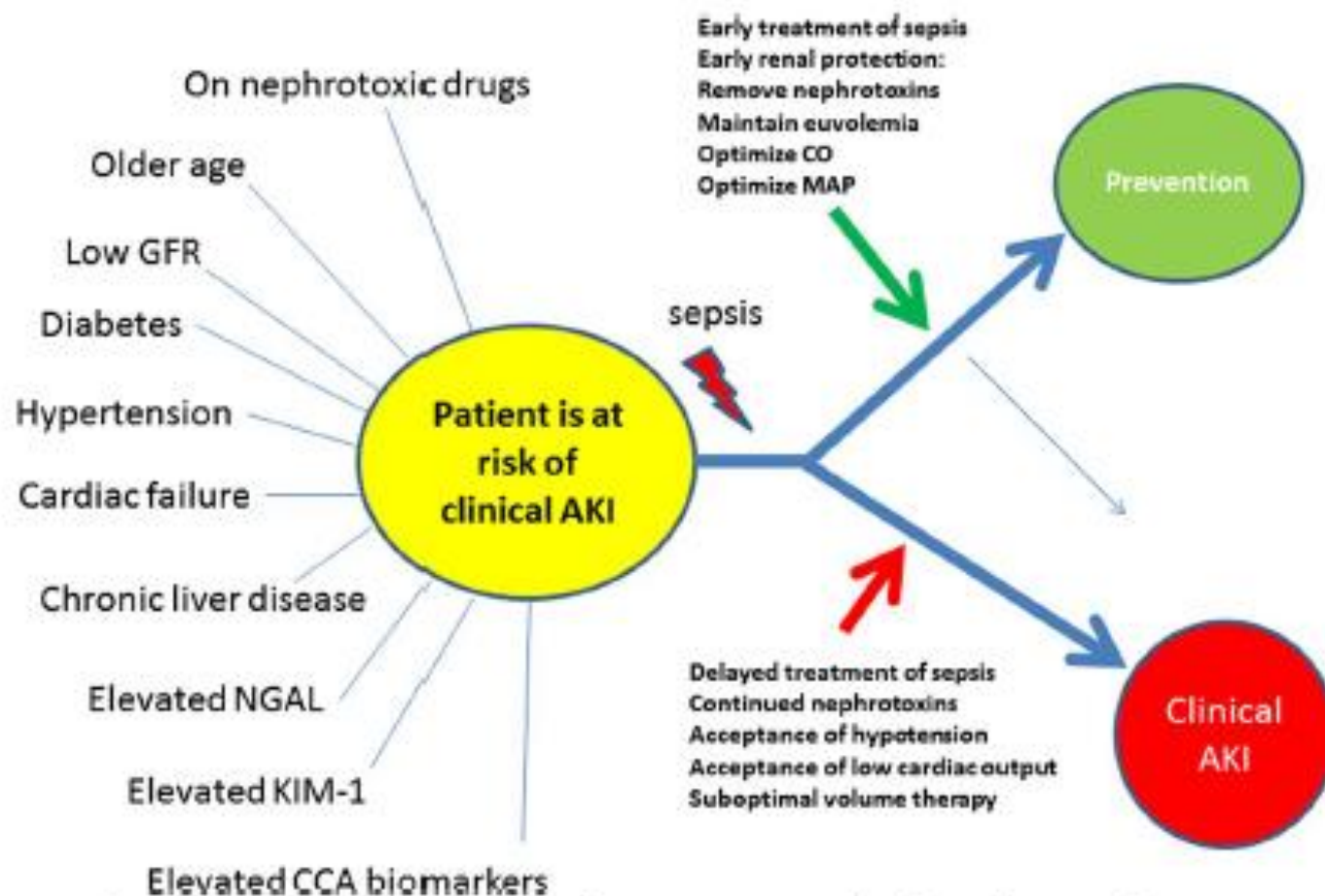
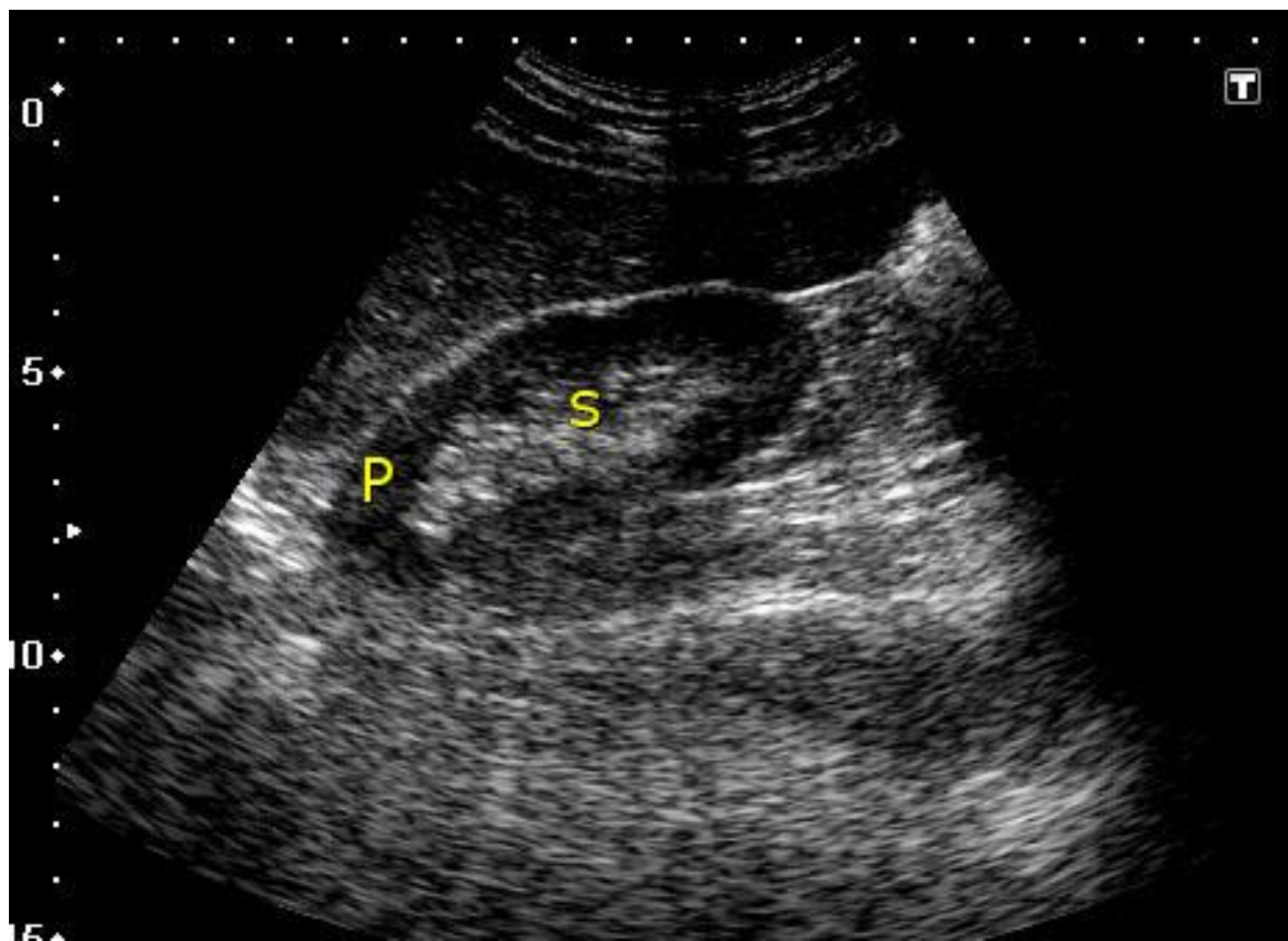
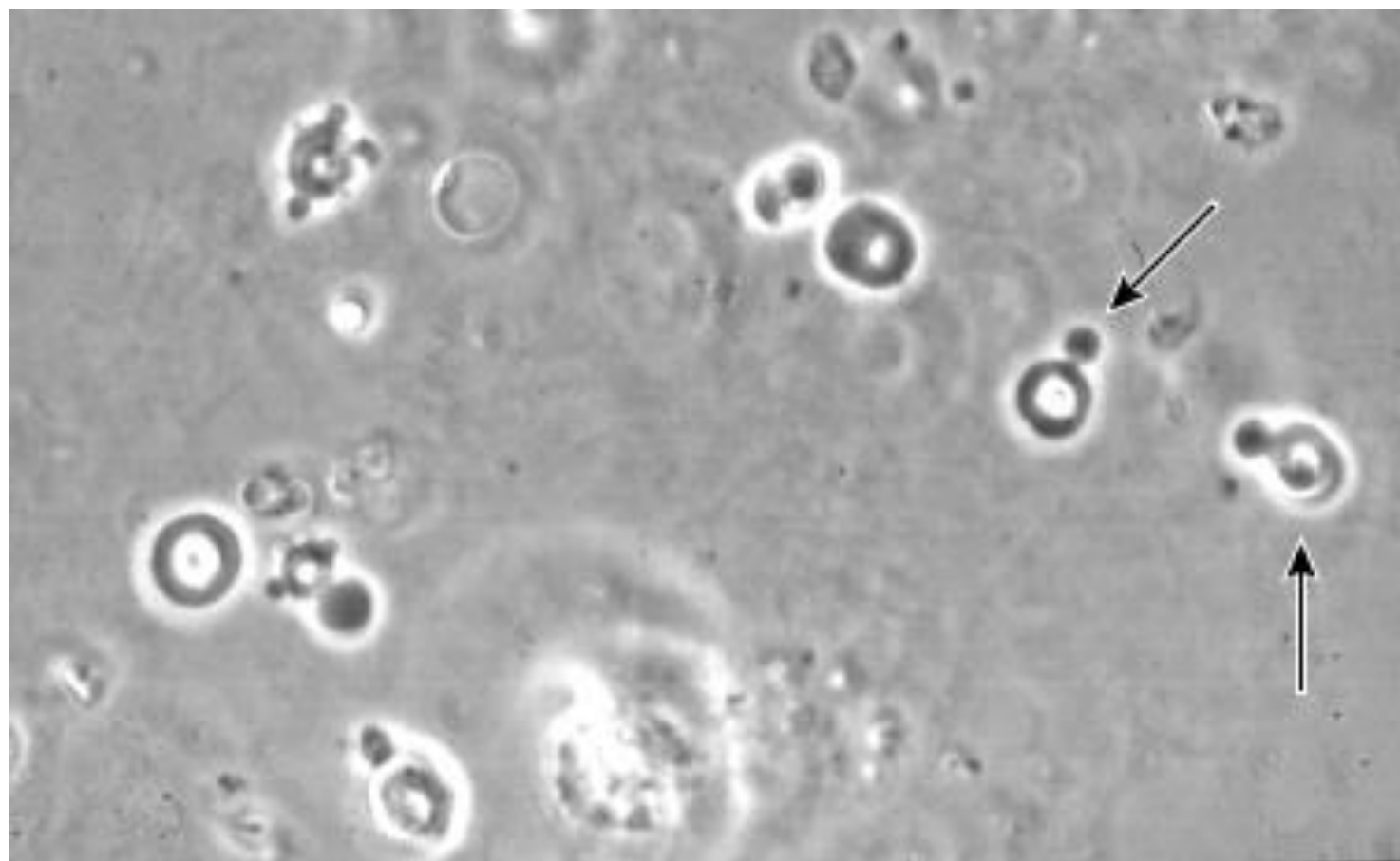


Fig. 2 Diagram illustrating how identification of a patient at risk of septic AKI can correctly inform all aspects of care





En resumen

Toda insuficiencia renal es aguda
hasta que se demuestre lo
contrario